

Traffic and Activity > Visits

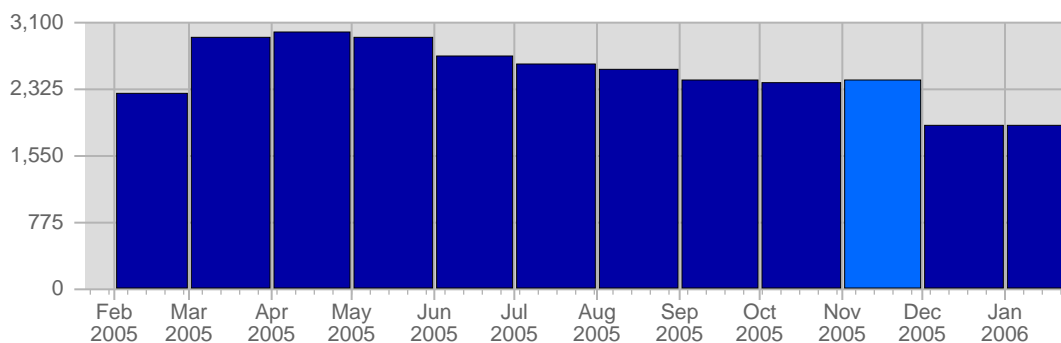
Report Description

Report Description: Visits during the month of November 2005

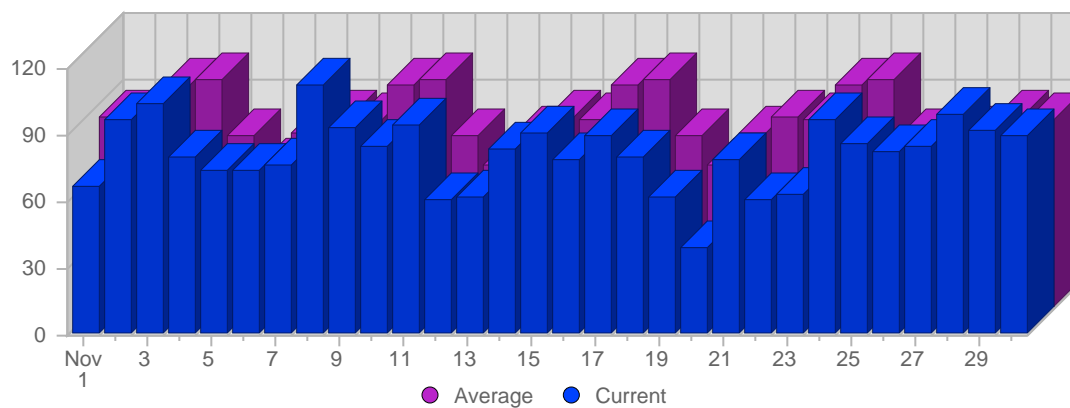
Report Range: Month of November 2005

Report Scope: Historical Data

Historic Breakdown



Breakdown



| Date | Total Visits | Average Visits Historically | Change | Percent of Total Visits |
|--------------------|--------------|-----------------------------|--------|-------------------------|
| Tue Nov 1st, 2005 | 66 | 85,40 | +66 ▲ | 2,72% |
| Wed Nov 2nd, 2005 | 97 | 84,40 | +97 ▲ | 3,99% |
| Thu Nov 3rd, 2005 | 104 | 100,00 | +104 ▲ | 4,28% |
| Fri Nov 4th, 2005 | 80 | 102,20 | +80 ▲ | 3,29% |
| Sat Nov 5th, 2005 | 74 | 77,00 | +74 ▲ | 3,05% |
| Sun Nov 6th, 2005 | 74 | 64,60 | +12 ▲ | 3,05% |
| Mon Nov 7th, 2005 | 76 | 78,80 | -14 ▼ | 3,13% |
| Tue Nov 8th, 2005 | 112 | 85,40 | +46 ▲ | 4,61% |
| Wed Nov 9th, 2005 | 93 | 84,40 | -4 ▼ | 3,83% |
| Thu Nov 10th, 2005 | 85 | 100,00 | -19 ▼ | 3,50% |
| Fri Nov 11th, 2005 | 94 | 102,20 | +14 ▲ | 3,87% |
| Sat Nov 12th, 2005 | 60 | 77,00 | -14 ▼ | 2,47% |
| Sun Nov 13th, 2005 | 62 | 64,60 | -12 ▼ | 2,55% |
| Mon Nov 14th, 2005 | 83 | 78,80 | +7 ▲ | 3,42% |
| Tue Nov 15th, 2005 | 90 | 85,40 | -22 ▼ | 3,71% |
| Wed Nov 16th, 2005 | 79 | 84,40 | -14 ▼ | 3,25% |
| Thu Nov 17th, 2005 | 89 | 100,00 | +4 ▲ | 3,66% |
| Fri Nov 18th, 2005 | 80 | 102,20 | -14 ▼ | 3,29% |
| Sat Nov 19th, 2005 | 62 | 77,00 | +2 ▲ | 2,55% |
| Sun Nov 20th, 2005 | 39 | 64,60 | -23 ▼ | 1,61% |
| Mon Nov 21st, 2005 | 78 | 78,80 | -5 ▼ | 3,21% |
| Tue Nov 22nd, 2005 | 61 | 85,40 | -29 ▼ | 2,51% |
| Wed Nov 23rd, 2005 | 63 | 84,40 | -16 ▼ | 2,59% |
| Thu Nov 24th, 2005 | 96 | 100,00 | +7 ▲ | 3,95% |
| Fri Nov 25th, 2005 | 86 | 102,20 | +6 ▲ | 3,54% |
| Sat Nov 26th, 2005 | 82 | 77,00 | +20 ▲ | 3,38% |
| Sun Nov 27th, 2005 | 84 | 64,60 | +45 ▲ | 3,46% |
| Mon Nov 28th, 2005 | 99 | 78,80 | +21 ▲ | 4,08% |
| Tue Nov 29th, 2005 | 92 | 85,40 | +31 ▲ | 3,79% |
| Wed Nov 30th, 2005 | 89 | 84,40 | +26 ▲ | 3,66% |
| | 2,429 | 2,387 | | |